

# EST320 Explosion-proof Piezoresistive Pressure Transmitter

- ✓ Pressure type: Gauge/Seal gauge Pressure
- ✓ Range 0~0.2MPa...60MPa
- ✓ Precision  $\pm 0.5\%$  F.S
- ✓ Stability 0.25% F.S/Year (typical), 0.4% F.S/Year (maximum)
- ✓ Signal Output 4~20mA, 0/1~5V, 0.5~4.5V, 0~10V
- ✓ Power supply 10/11~30Vdc, 8~30Vdc, 5V (ratio)
- ✓ OEM: Available

## Applications

Constant pressure water supply | CNG | Water supply system of tele-control, telemetering, tele-signaling and tele-commissioning | Central air conditioning | Automatic test system | Well real-time management | Pipe / tank pressure calculation | Heat supply of boilers

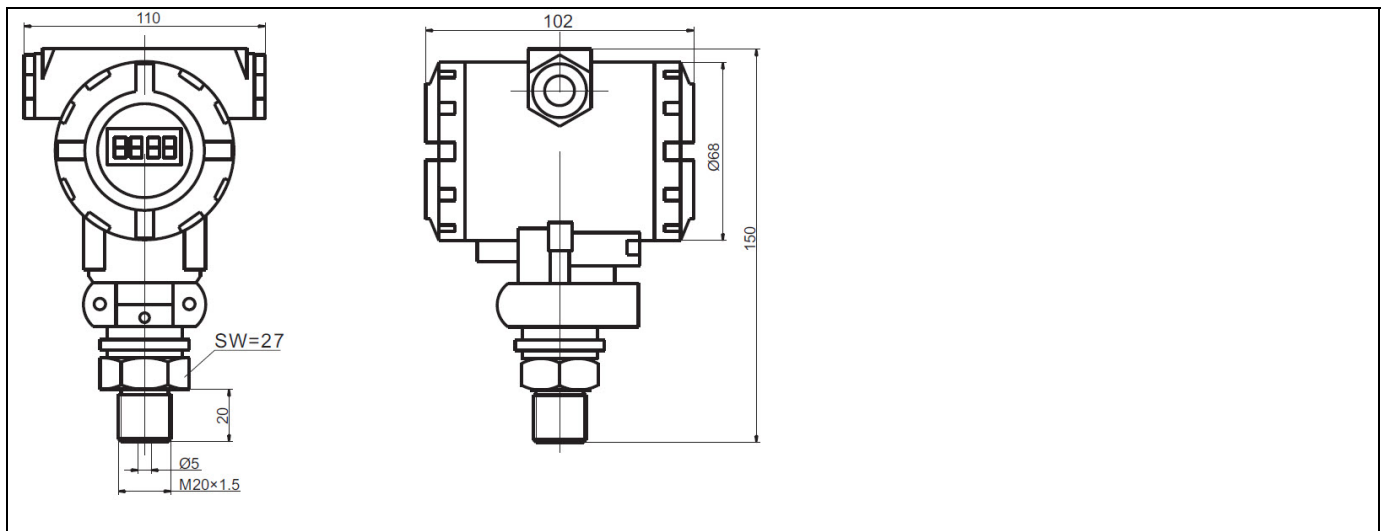


## Product Introduction

EST320 adopts 1Cr18Ni9Ti stainless steel construction, active sensing element of international brands, and the specially designed V/I converting circuit for easy zero/span calibration; non-polarized two-wire output and DC-AC three-wire output; and the buffer head that can prevent water hammer or shocking of 5~10 times of the span.

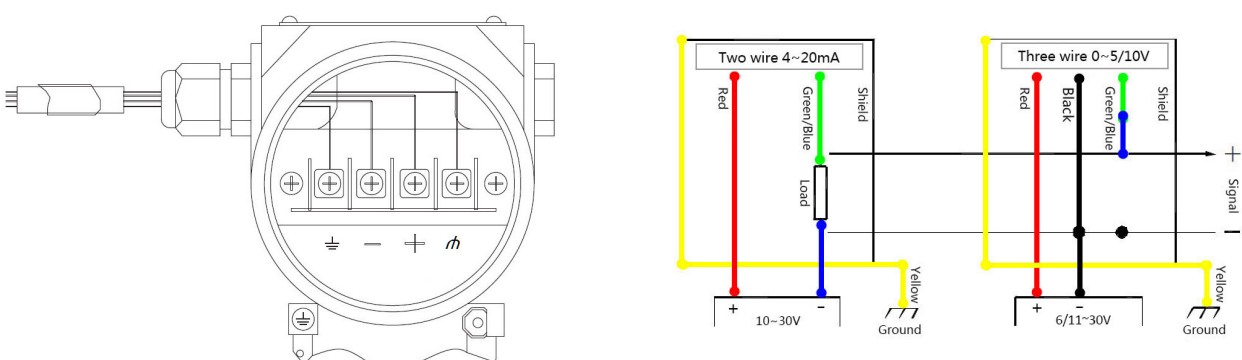
Featuring small drifts, stable performance and reasonable construction, EST320 is applicable to the pressure measurements of gas and liquid, such as water, oil and other light corrosive liquid and gas.

## Dimensional Drawings and Electrical Connections



## Electrical Connections of Terminal Block

Terminal block within housing cover				
Symbol	+	-	$\equiv$	$\rho$
Current type	24Vdc	4~20mA		Shield
Voltage type	24V+	V out	24V-	Shield
Signal output				
Two wire	4~20mA			
Three wire	0~5V, 0.5~4.5V, 1~5V, 0~10V (dc)			

## Specifications

Measuring Range	0~0.2MPa...60MPa		Medium compatibility	All 1Cr18Ni9Ti-compatible corrosive mediums	
Overload pressure	2 times of rated pressure		Insulation	>100MΩ@50V	
Burst Pressure	3 times of rated pressure ±0.5/55℃; Note temperature effect error is doubled at range 3; the error for analog model is doubled		Electric Strength	500V@60second	
Precision	±0.5%F.S (choose EST330 or air series for higher precision)		Vibration/Shock	10g/5~2000Hz, axes X/Y/Z20g sine 11ms	
Stability	0.25%F.S/Y, 0.4%F.S/Ymax		Pressure durability	2 x 10 <sup>6</sup> pressure cycle@25℃	
Working temperature	-40~85℃		Display	-9999~99999	
Compensation temperature	-10~70℃				
Electrical parameters	Two wire	Three wire			
Output Signal	4~20mA	0~5Vdc	1~5Vdc	0.5~4.5Vdc	0~10Vdc
Power supply	10~30Vdc	8~30Vdc		5V (Ratio)	11~30Vdc
Load resistance	(U-10)/0.02(Ω)	>20kΩ			
Electrical Connections	Waterproof cable conduit connections IP65				
Process connection	M20 x 1.5, G1/2, R1/4, NPT1/2;				
Pressure type	Gage pressure (G), Seal gage pressure(S), Response time: 10ms				
Electromagnetic compatibility	Electromagnetic radiation: EN50081-1/-2; Electromagnetic Sensitivity: EN50082-2				
1MPa=10bar; 1bar≈14.5PSI; 1PSI=6.8965kPa; 1kgf/cm2=1atm; 1atm≈98kPa					

## Ordering Procedure

EST	Explosion-proof Piezoresistive Pressure Transmitter									
	Code		Model							
	320G		Universal							
	320D		Explosion-proof							
	320C		+ display							
	320T		+ radiating ring							
	Code		Span							
	1		0~0.2...60MPa							
	2		0~2bar...600bar							
	Code		Output Type							
	A		4~20mA							
	V		0~5Vdc							
	V1		1~5Vdc							
	V05		0.5~4.5Vdc							
	V2		0~10Vdc							
	Code		Power Supply							
	DC5		5Vdc							
	DC24		24 Vdc							
	DC6		6~24 Vdc							
	DC10		10~30 Vdc							
	DC11		11~30 Vdc							
	Code		Process connection							
	M		M20 x 1.5							
	G2		G1/2							
	R2		R1/2							
	N2		NPT1/2							
	Code		Electrical Connections							
	Wjc		Waterproof cable conduit connections							
	Code		Cable length XXm=... m							
	Code		Packing							
	Bb		Bubble bag							
	Foam		Plastics foam							
EST	320G	1	A	DC5	M	Wjc	1.5m	Bb		