

# ESG501 Economical Pressure Gauge

- ✓ Pressure Type: Low/Medium Pressure Gauge
- ✓ Working Principle: Bourdon Tube (Mechanical)
- ✓ Connection type: Bottom/Back mount
- ✓ Display: Pointer
- ✓ Diameter: 40/50/60/63/100/150/200/250mm
- ✓ Range:-0.1~0~100MPa
- ✓ Accuracy: 1.5%/2.5%F.S
- ✓ OEM: Available

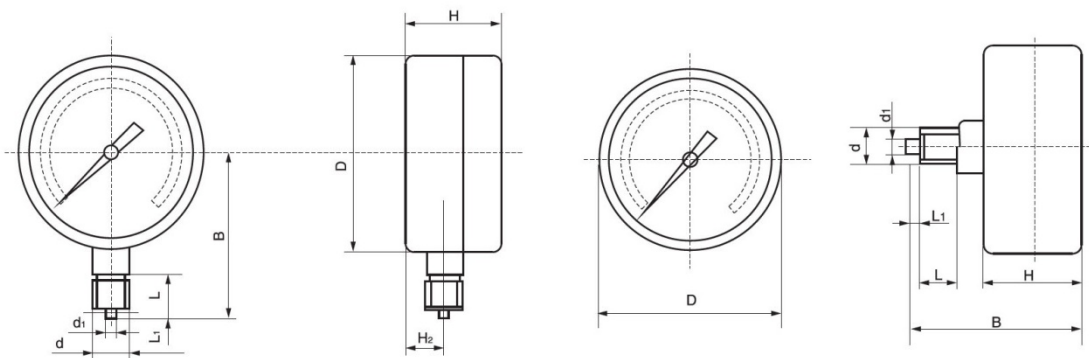
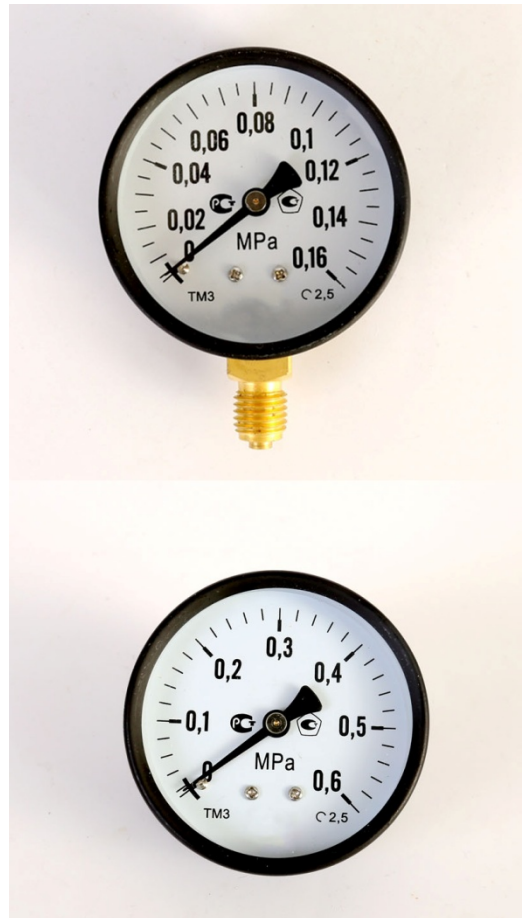
## Applications

Hydraulic and pneumatic systems | Pumps | Compressors | Water systems | Regulators | Suitable for fluid medium which does not clog connection port or corrode copper or copper alloy

## Product Introduction

ESG501 line Economical Pressure Gauge is well suited for measuring gases or liquids which will neither explode, nor crystallize, nor corrode copper or copper alloys. We have snap-in plastic lens type, screw lens type, chromed ring type, press-in lens type, wika bayonet type for options. Bottom/ radial direction (ESG501) and back mounting (ESG501Z) are available

## Drawing and Dimension



Diameter	D	d	d 1	L	B	H	H2	L1
40	Φ40	M10x1	Φ2.5	10	38	24	8.5	2
40Z	Φ40	M10x1	Φ2.5	10	40	24	0	
60	Φ60	M14x1.5 or M10x1	Φ5	14	56	30	12	
60Z	Φ60	M14x1.5 or M10x1	Φ5	14	58	30	0	
100	Φ100	M20x1.5	Φ6	20	90	44	18	
100Z	Φ100	M20x1.5	Φ6	20	85	44	30	

150	Φ150	M20x1.5	Φ6	20	115	48	18	2
150Z	Φ150	M20x1.5	Φ6	20	92	47	20	
200	Φ200	M20x1.5	Φ6	20	146	50	18	
250	Φ250	M20x1.5	Φ6	20	167	50	18	

## Specification

Diameter	40/50/60/63/100/150/200/250mm	Casing	Steel/Plastic
Measuring Range	-0.1~0~100Mpa	Movement	Brass
Pressure Unit	Mpa/psi/bar/kg/cm2	Bourdon Tube	Phosphor bronze
Accuracy	± 1.5%/ ± 2.5%	Connector	Brass
Mounting Type	Bottom/Back/ (with flange)	Thread	M20*1.5/ G1/2 NPT1/2 / G1/4 / NPT1/4
Humidity	≤85%	Temperature	-40~70°C:

Additional error when temperature changes from reference temperature of 68°F (20°C) +0.4% of span for every 18°F(10°C) rising or falling.

## Ordering Procedure

ESG	Economical Pressure Gauge						
	Code	Model					
	501	Bottom/ Radial direction mounting					
	501 Z	Back side mounting					
		Code	Span				
		1	-0.1~0Mpa				
		2	-0.1~2.4Mpa				
		3	0~100Mpa				
		Code	Diameter				
		40	40mm / 1.5inch				
		50	50mm / 1.97 inch				
		60	60mm / 2.36 inch				
		63	63mm / 2.48inch				
		100	100mm / 3.94inch				
		150	150mm / 5.9 inch				
		200	200mm / 7.87 inch				
		250	250mm / 9.84 inch				
		Code	Accuracy				
		15	± 1.5%				
		25	± 2.5%				
		Code	Process connection				
		M 20	M20 x 1.5				
		M10	M10 x 1				
		G 12	G1/2				
		G14	G1/4				
		G18	G1/8				
		N12	NPT1/2				
		N14	NPT1/4				
		N18	NPT1/8				
		Code	Casing Material				
		S	Steel				
		P	Plastic				
		Code	Measuring unit				
		M	Mpa				
		P	psi				
		B	bar				
		K	kg/cm2				
ESG	501	1	63	15	M20	S	M