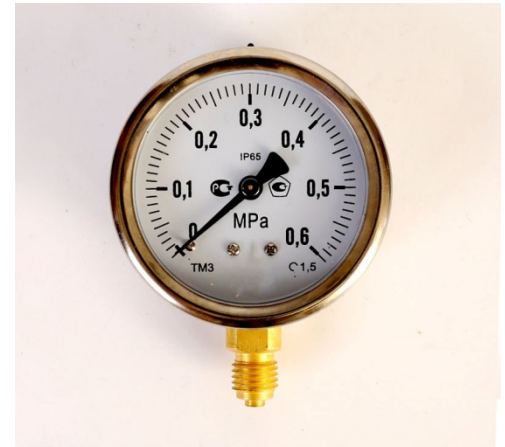


ESG502 Shock Resistance Pressure Gauge

- ✓ Pressure Type: Low/Medium Pressure Gauge
- ✓ Working Principle: Bourdon Tube (Mechanical)
- ✓ Connection type: Bottom/Back mount
- ✓ Display: Pointer
- ✓ Diameter: 40/50/60/63/100/150/200/250mm
- ✓ Range:-0.1~0~100MPa
- ✓ Accuracy: 1.0%/1.5%/2.5%F.S
- ✓ OEM: Available



Applications

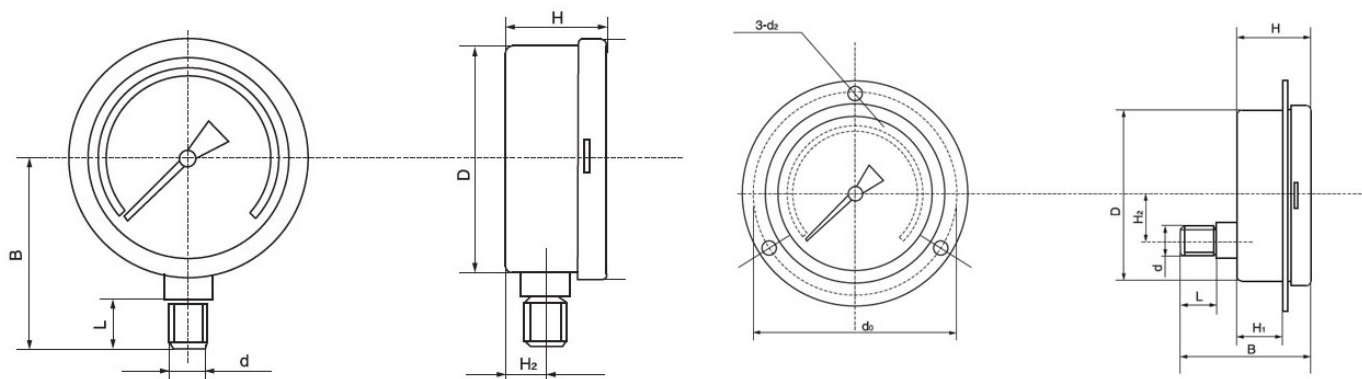
Metallurgical industry | Power station | Oil industry | Chemical industry

Product Introduction

ESG502 line Shock Resistance Pressure Gauge with damp oil filled inside the gauge, the buffer has excellent shock resistance ability. It is well suited for measuring those medium which has strong pulsation or pressure concussion or service medium which disappear suddenly in the manufacture, or for the situation which shock fiercely.

ESG502 can measure the average value of the pulsing pressure of the gas or liquid, the outer case of shock resistance pressure gauge is made of stainless steel, which can be used in strong corrosion and strong shock process.

Specification and Drawing



Diameter	D	H	H2	B	D2	d 0	d	L	H1	Measuring Range	Accuracy
60	Φ60	32	13	55			M14x1.5	14	22	0~0.1/0~0.16/0~0.25/0~0.4	2.5%
60Z	Φ60	32	0	65	4.5	76				0~0.6/0~0.1/0~1.6/0~2.5	
60B	Φ60	32	13	55						0~4/0~6/0~10/0~16/0~25/0~40	
100	Φ100	44	18	90			M20x1.5	20	27	0~0.1/0~0.16/0~0.25/0~0.4	1.6%
100Z	Φ100	44	30	90	5.5	118				0~0.6/0~0.1/0~1.6/0~2.5	
100B	Φ100	44	18	90						0~4/0~6/0~10/0~16/0~25/0~40/0~60	
150	Φ150	44	18	120					0~0.1/0~0.16/0~0.25/0~0.4		
150Z	Φ150	44	55	95	5.5	165			0~0.6/0~0.1/0~1.6/0~2.5		
150B	Φ150	44	18	120					0~4/0~6/0~10/0~16/0~25/0~40/0~60/0~100		

Specification and Ordering Procedure

Diameter	40/50/60/63/100/150/200/250mm	Casing	Stainless Steel
Measuring Range	-0.1~0~100Mpa	Movement	Brass
Pressure Unit	Mpa/psi/bar/kg/cm2	Bourdon Tube	Phosphor bronze
Accuracy	±1.0%/±1.5%/±2.5%	Connector	Brass
Mounting Type	Bottom/Back/ (with flange)	Thread	M20*1.5/ G1/2 NPT1/2 / G1/4 / NPT1/4
Oil filed	Silicone oil / Glycerin filed	Shock	V.H.4
Humidity	≤85%	Temperature	5~55°C (Glycerin filled); -25~55°C (Silicone oil filled)

Additional error when temperature changes from reference temperature of 68°F (20°C) +0.4% of span for every 18°F(10°C) rising or falling.

ESG	Economical Pressure Gauge	
	Code	Model
	502	Bottom/ Radial direction mounting
	502 Z	Back side mounting
	Code	Span
	1	-0.1~0Mpa
	2	-0.1~2.4Mpa
	3	0~100Mpa
	Code	Diameter
	40	40mm / 1.5inch
	50	50mm / 1.97 inch
	60	60mm / 2.36 inch
	63	63mm / 2.48inch
	100	100mm / 3.94inch
	150	150mm / 5.9 inch
	200	200mm / 7.87 inch
	250	250mm / 9.84 inch
	Code	Accuracy
	10	±1.0%
	15	±1.5%
	25	±2.5%
	Code	Process connection
	M 20	M20 x 1.5
	M10	M10 x 1
	G 12	G1/2
	G14	G1/4
	G18	G1/8
	N12	NPT1/2
	N14	NPT1/4
	N18	NPT1/8
	Code	Oil filled
	S	Silicone oil
	G	Glycerine
	D	Dry
	Code	Measuring unit
	M	Mpa
	P	psi
	B	bar
	K	kg/cm2

ESG 502 1 63 15 M20 S M