

# EST330S High Temperature Pressure Transmitter

- ✓ Accuracy:  $\pm 0.5\%$ F.S
- ✓ OEM, Un-standard order available
- ✓ Narrow Range: 0-130mbar
- ✓ High Temperature: -40~125°C
- ✓ Kinds of pressure range and signal output
- ✓ Kinds of connection and pressure port



## Applications

Fuel station | Gas dispenser | Refrigerator hydraulic lubricating | Pressure instrument | Energy and water treatment | Automatic detecting system

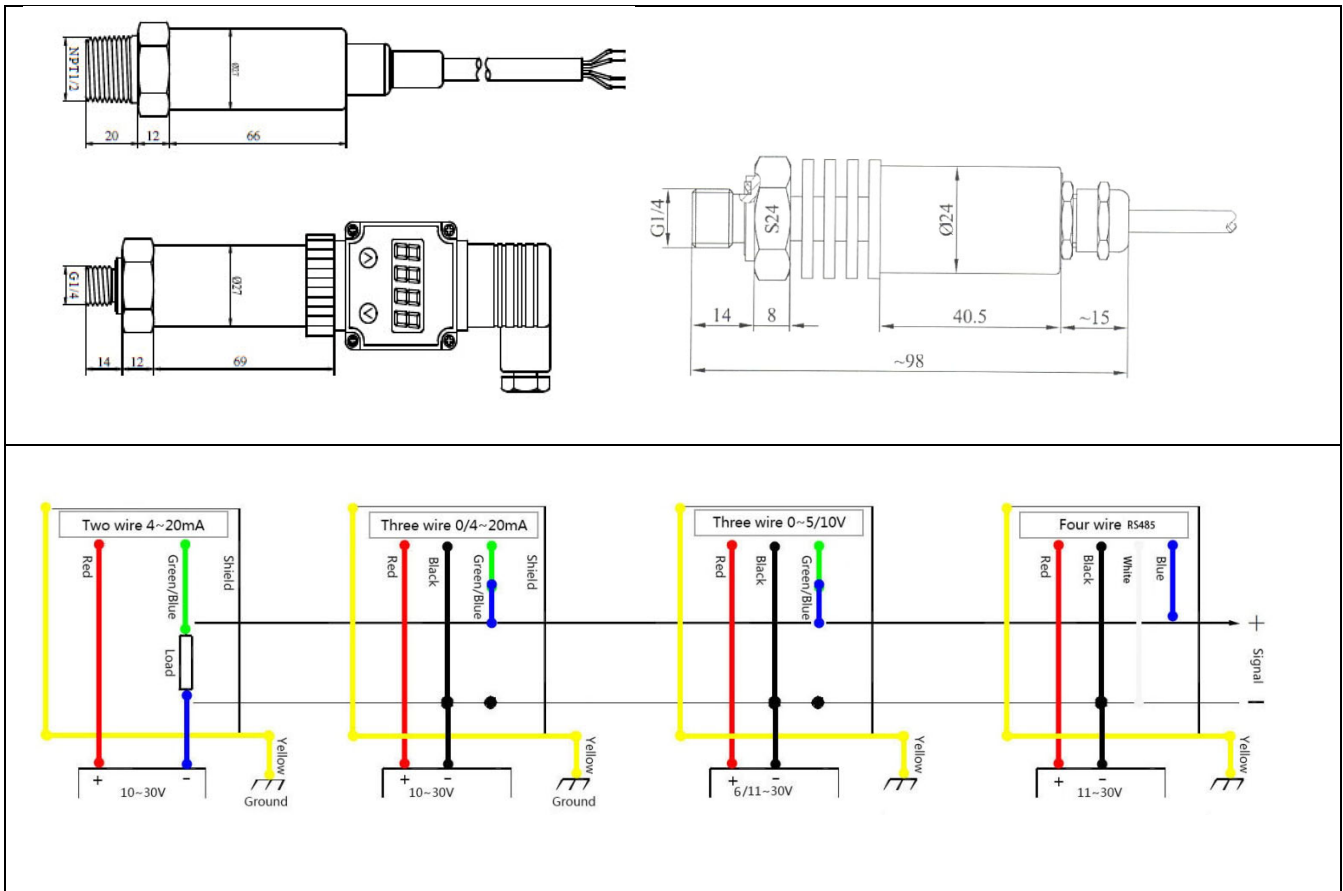
## Product Introduction

EST330S High Temperature Pressure Transmitter adopt the German sensor which has very table and advanced performance even temperature reach to 130 °C, the design of compact size is much rugged and light weight which can save installation space. Excellent sensor performance guarantees the range of EST330S can be 0-125mbar and 0-400mbar, and the accuracy is 0.5%/F.S.

## Electrical Connections and Dimensional Drawings

DIN 43650 HSM		Cable outlet	
	U+ / I+ = 1		U+ / I+ = Red
	U- / I- = 2		U- / I- = Black
	S+ = 3		S+ = Green / Blue
	Shield = 4 / Housing		Shield = Housing / Yellow





## Specifications

Measuring Range	0-125mbar; 0-400mbar		Medium compatibility	Corrosive medium compatible with 1Cr18Ni9Ti
Overload pressure	1.5 times of rated pressure		Insulation	>100MΩ@100Vdc
Burst Pressure	3 times of rated pressure		Electric Strength	500V@60second
Accuracy	±0.5%F.S (at 25 °C)		Electrical Connections	HSM. DIN43650, Protection IP65/ Cable outlet, Protection IP68
Stability	0.25%F.S/Y, 0.4%F.S/Ymax		Process connection	NPT <sup>1</sup> / <sub>2</sub> ; NPT <sup>1</sup> / <sub>4</sub> ; BSP <sup>1</sup> / <sub>2</sub> " ; BSP <sup>1</sup> / <sub>4</sub> " ;
Working temperature	-40~85 °C, (-40~125 °C with radiator)		Response Time	10ms
Seal material	NBR O-Ring default; EPDM		EMC	EMI: EN50081-1/-2; EMS: EN50082-2
Electrical parameters	Two wire	Three wire		
Output Signal	4~20mA	0~10Vdc	0~5V	
Power supply	8~28Vdc	13~28Vdc	8~28Vdc	
Load resistance	(U-8)/0.023(Ω)	Voltage type: >10K Ω		
1MPa=10bar; 1bar≈14.5PSI; 1PSI=6.8965kPa; 1kgf/cm2=1atm; 1atm≈98kPa				

## Ordering Procedure

EST	Piezoresistive Pressure Transmitter								
	Code	Model							
	330S	Universal (without display)							
	330SD	Display (4LCD)							
	Cod	Span							
	1	0-125mbar							
	2	0-400mbar							
	Code	Output Type							
	A	4~20mA							
	V	0~5V							
	V1	0~10V							
	V05	1~5V							
	V2	1~6V							
	Code	Precision							
	0.25	±0.25%F.S							
	0.5	±0.5%F.S							
	Code	Power Supply							
	DC8	8~28Vdc							
	DC13	13~28Vdc							
	Code	Process connection							
	M	M20 x 1.5							
	G2	G1/2							
	R2	R1/2							
	N2	NPT1/2							
	B12	BSP 1/2"							
	Code	Electrical Connections							
	D	DIN43650-A							
	C	Cable Electrical Connection							
	H	HSM							
	Code	Cable length XXm=... m							
	Code	Packing							
	Bb	Bubble bag							
	Foa	Plastics foam							
EST	330S	1	A	0.25	DC8	B12	C	1.5	Bb